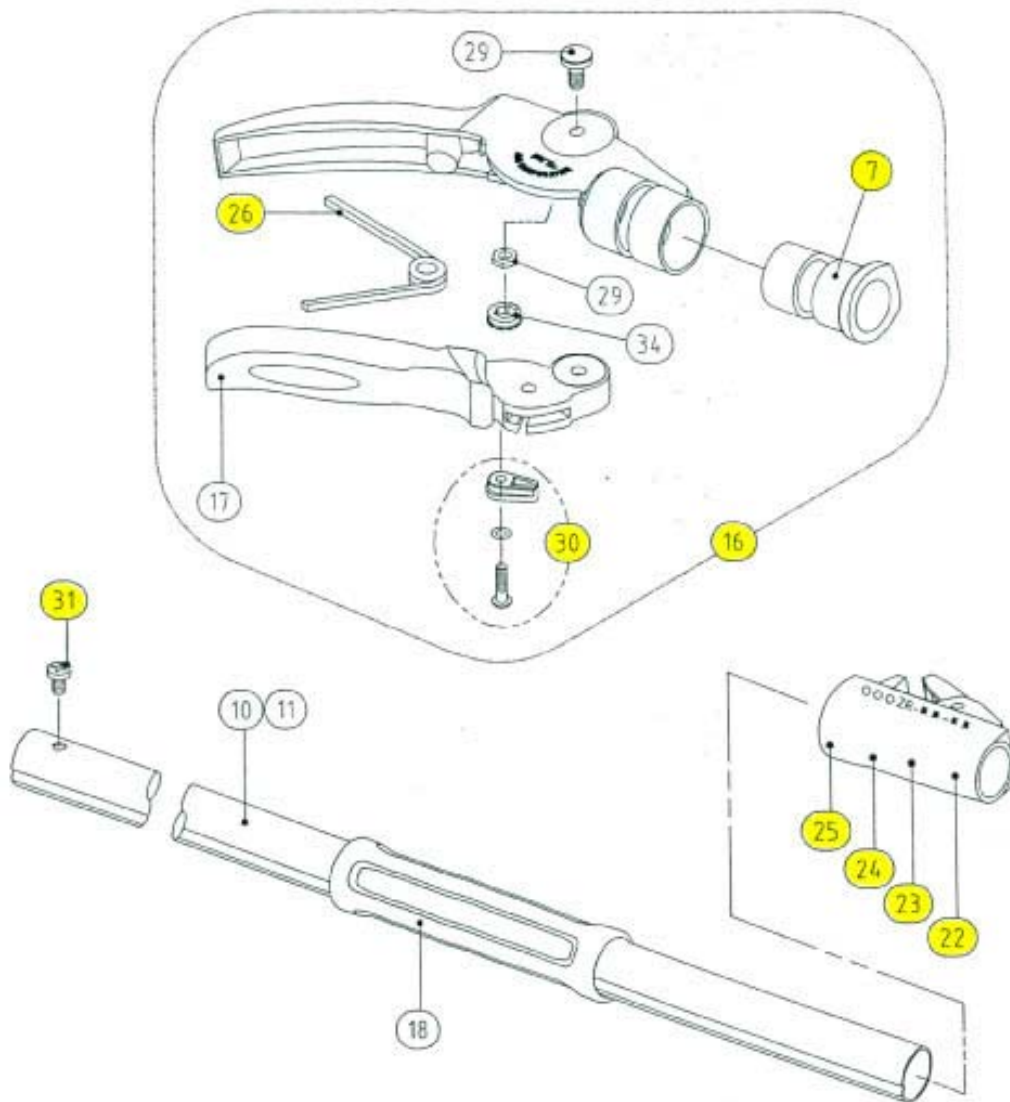


ZR Telescoping Series

SPARE PARTS DIAGRAM—page 2 of 2



| | | | |
|--------------|---|--------------|--------------------------------|
| 7. SP-ZR339 | Sleeve for Grip | 22. SP-ZR354 | Joint Case Set for LA-160ZR203 |
| 10. | Lower Pipe for ZR203 | 23. SP-ZR355 | Joint Case Set for LA-160ZR305 |
| 11. | Lower Pipe for ZR305 | 24. SP-ZR356 | Joint Case Set for LA-180ZR203 |
| 16. SP-ZR348 | Handle Set (includes spring and stop screw) | 25. SP-ZR357 | Joint Case Set for LA-180ZR305 |
| 17. | Grip Lever Only | 26. SP-LA101 | Spring for Handle |
| 18. | Middle Grip | 29. | Center Bolt & Nut for Grip |
| 25. SP-ZR357 | Joint Case Set for LA-180ZR305 | 30. SP-ZR380 | Handle Latch Lock Set |
| 26. SP-LA101 | Spring for Handle | 31. SP-LA39 | Stop Screw |
| 27. SP-ZR203 | Steel Band Set for ZR203 | 34. | Nut Cap for Handle |

***All highlighted items are available from inventory.
All others are available by Special Order.***